

Introduction

The new Exact **Word Merge** application offers a wide range of improvements over the mail merge functionality. Among them is a new method of creating **Word Merge** templates directly in Microsoft Word. In order to create templates, XML Mapping Task Pane must first be installed in Microsoft Word. This is done via a third party add-on (the CodePlex). Installing XML Mapping Task Pane for Microsoft Word will add a new button, **XML Mapping**, to the **Developer** ribbon.

In Microsoft Word 2013 and higher, there is a built-in XML Mapping Task Pane which provides the same functionality. Hence, it is recommended to use this built-in feature if you are using Microsoft Word 2013 and higher.

Note: By downloading XML Mapping Task Pane for Microsoft Word 2010 (the "task pane"), you agree that your use is subject to the license terms and conditions located at <http://xmlmapping.codeplex.com/license>. Additionally, by downloading the task pane, you further acknowledge and agree that you assume all risks in using the task pane, and Exact provides no warranty or support for the task pane. Exact disclaims any losses, claims, damages, and liability whatsoever that may arise from your download and use of the task pane.

Description

This document is divided into the following sections:

- [Requirements and prerequisites](#)
- [How do I download and install XML Mapping Task Pane?](#)
 1. [Downloading XML Mapping Task Pane](#)
 2. [Installing XML Mapping Task Pane](#)
 3. [Troubleshooting when XML Mapping Task Pane does not install](#)
 4. [Enabling XML Mapping Task Pane in Microsoft Word](#)

[Return to top](#)

Requirements and prerequisites

Before installing XML Mapping Task Pane, users must ensure they have the relevant requirements and prerequisites. For more information, see [Hardware and software requirements for Exact Synergy Enterprise](#).

If any of the prerequisites are not installed, the setup will download and install them automatically, but a reboot may be required.

[Return to top](#)

How do I download and install XML Mapping Task Pane?

To download and install XML Mapping Task for Microsoft Word, observe the following steps. However, if you are using Microsoft Word 2013 and higher with the built-in XML Mapping Task Pane, you can go directly to [Enabling XML Mapping Task Pane in Microsoft Word](#).

a. Downloading XML Mapping Task Pane

1. Open an Internet browser and go to <https://archive.codeplex.com?p=xmlmapping>. The following page will be displayed:

xmlmapping

XML Mapping Task Pane for Word 2007/2010

[download archive](#)

The XML Mapping Task Pane for Word can be used to build templates that utilize content controls and XML mapping in Word 2007/2010. You can use the task pane to add XML parts to Word documents, view a part's XML structure, and drag and drop XML nodes into the document to create mapped content controls, making it easy and quick to create structured document templates.

[home](#) [issues](#) [discussions](#)

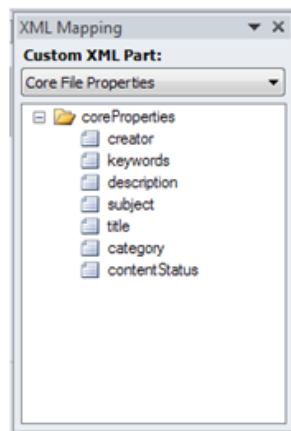
XML Mapping Task Pane for Word 2007/2010

The XML Mapping Task Pane for Word can be used to build templates that utilize content controls and XML mapping in Word 2007/2010.

You can use the task pane to add XML parts to Word documents, view a part's XML structure, and drag and drop XML nodes into the document to create mapped content controls, making it easy and quick to create structured document templates.

Details

This add-in adds a Mapping group to Word 2007 and 2010's Developer tab. When opened, the task pane displays all of the XML parts in the current document in a tree view:



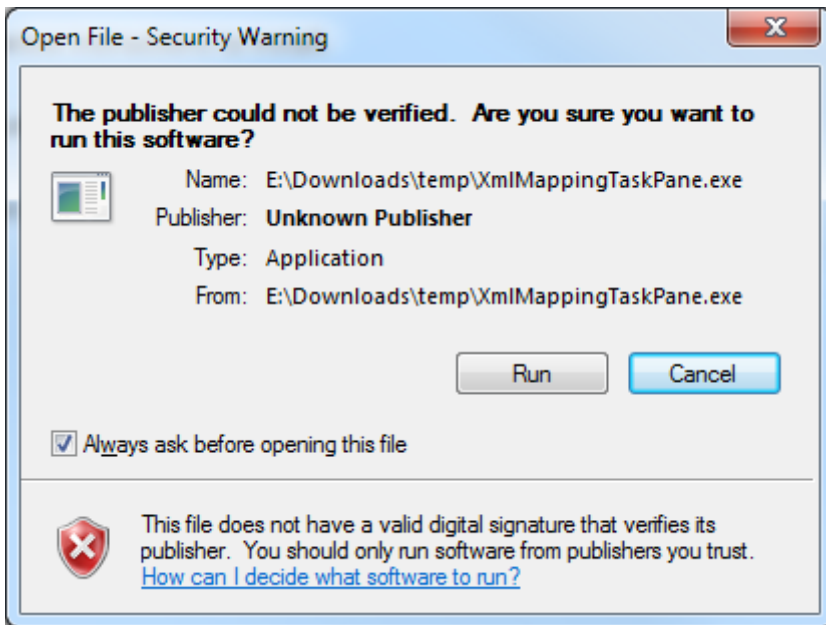
From the task pane, you can perform all tasks necessary to set up a document with mapped content controls:

2. Click **Download Archive** in the website to download the xmlmapping.zip file.
3. Unzip the downloaded zip file.
4. Go to the **Releases** folder, and then go to the **0** folder.
5. Right-click on the "6e2c7cf1-3f41-4b2b-a5e5-3aff5571692a" file, and click **Rename**.
6. Rename the file, and add the ".exe" extension.
7. Use this .exe file to install the XML Mapping Task Pane.

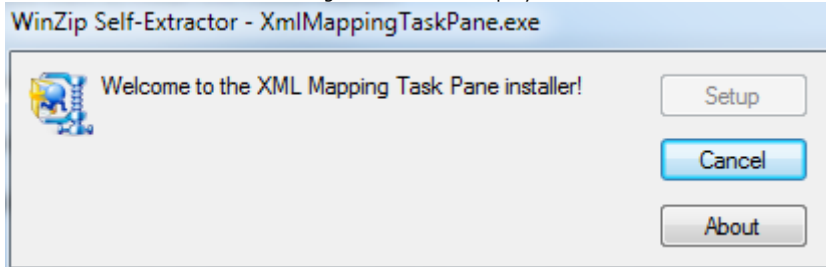
[Return to top](#)

b. Installing XML Mapping Task Pane

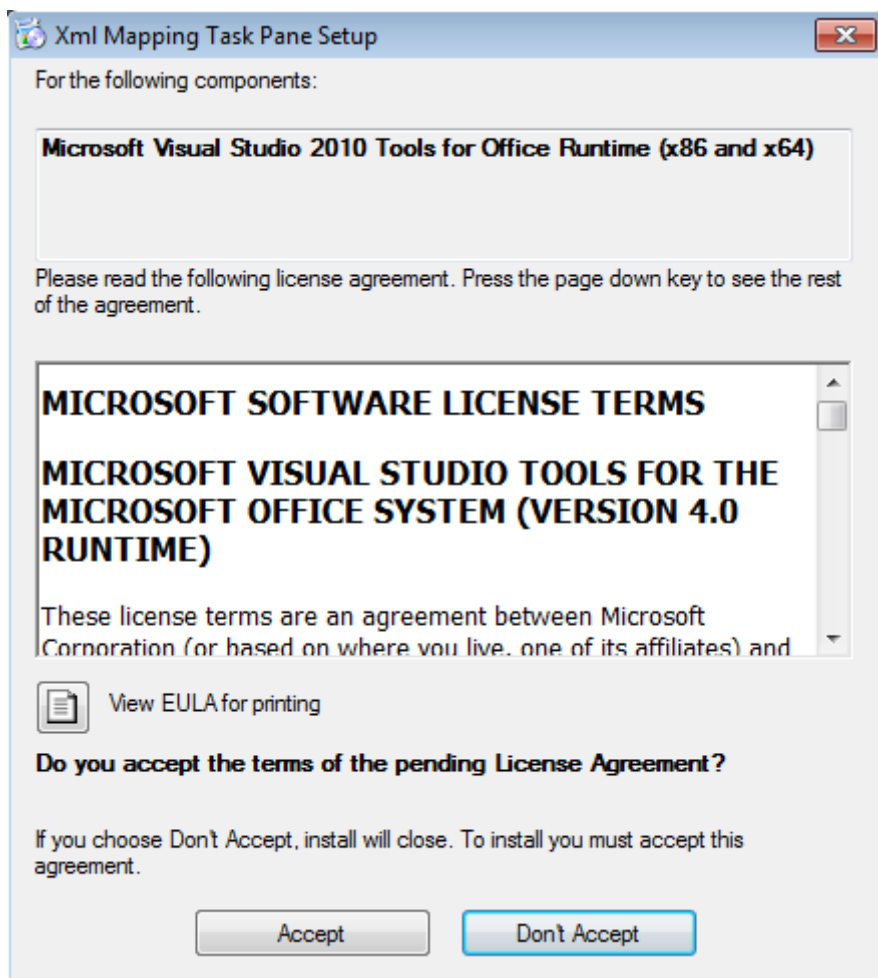
1. Before starting the installation, close all opened Microsoft Word documents to allow the installation to run successfully. Locate the installation file and double click the file to begin the installation. The following warning message will be displayed:



2. Click **Run** to continue. The following screen will be displayed:

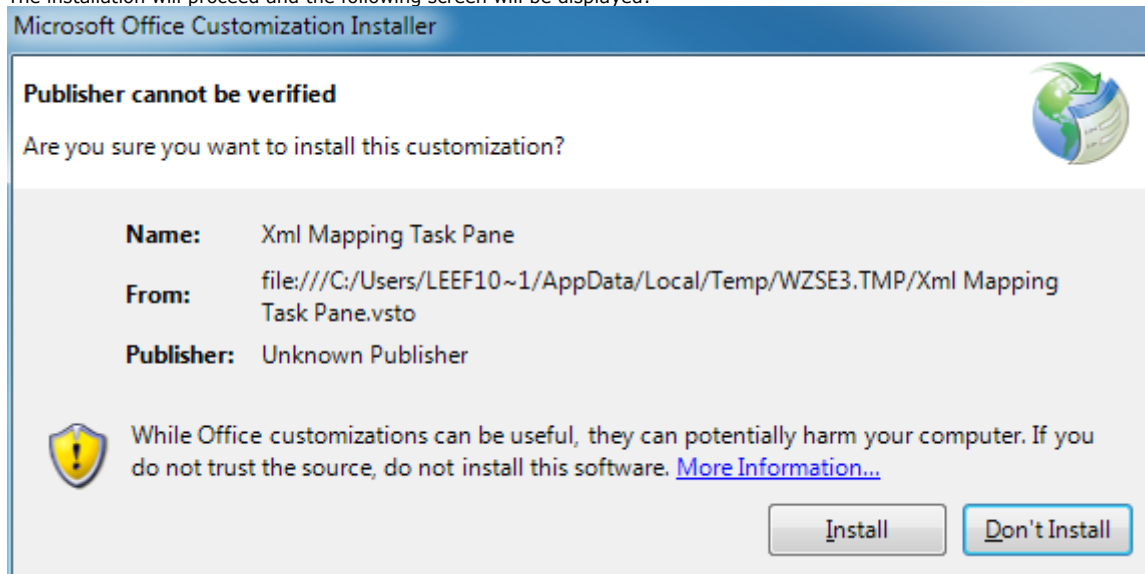


3. If Microsoft.NET Framework 4 Client Profile, Microsoft Visual Studio 2010 Tools for Office Runtime, or Windows Installer 3.1 is not installed, the following screen will be displayed:

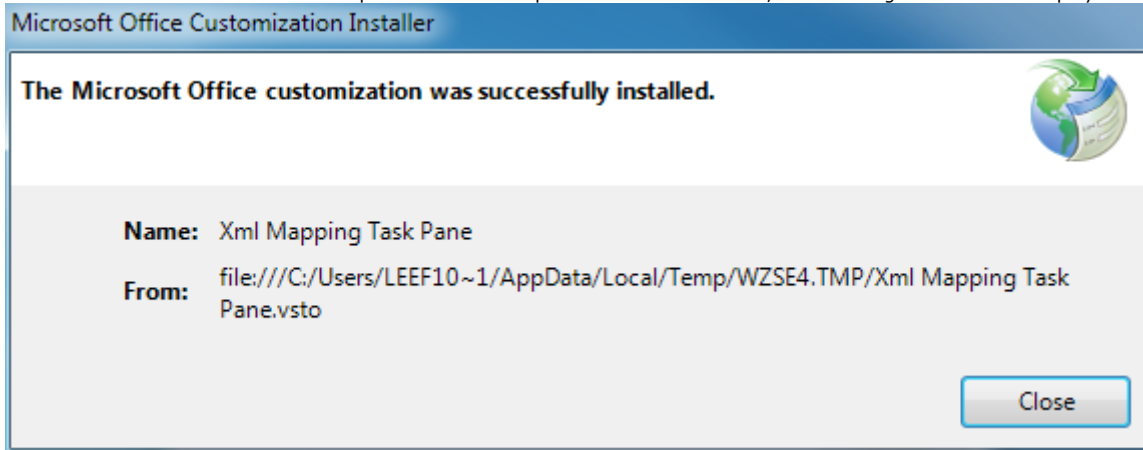


Click **Accept** to install the prerequisites. If these prerequisites are already installed on your computer, proceed to step 4.

4. The installation will proceed and the following screen will be displayed:



5. Click **Install** to start the installation. Upon successful completion of the installation., the following screen will be displayed:



6. Click **Close** to exit.

[Return to top](#)

c. Troubleshooting when XML Mapping Task Pane does not install properly

1. During installation, you may encounter the following error:



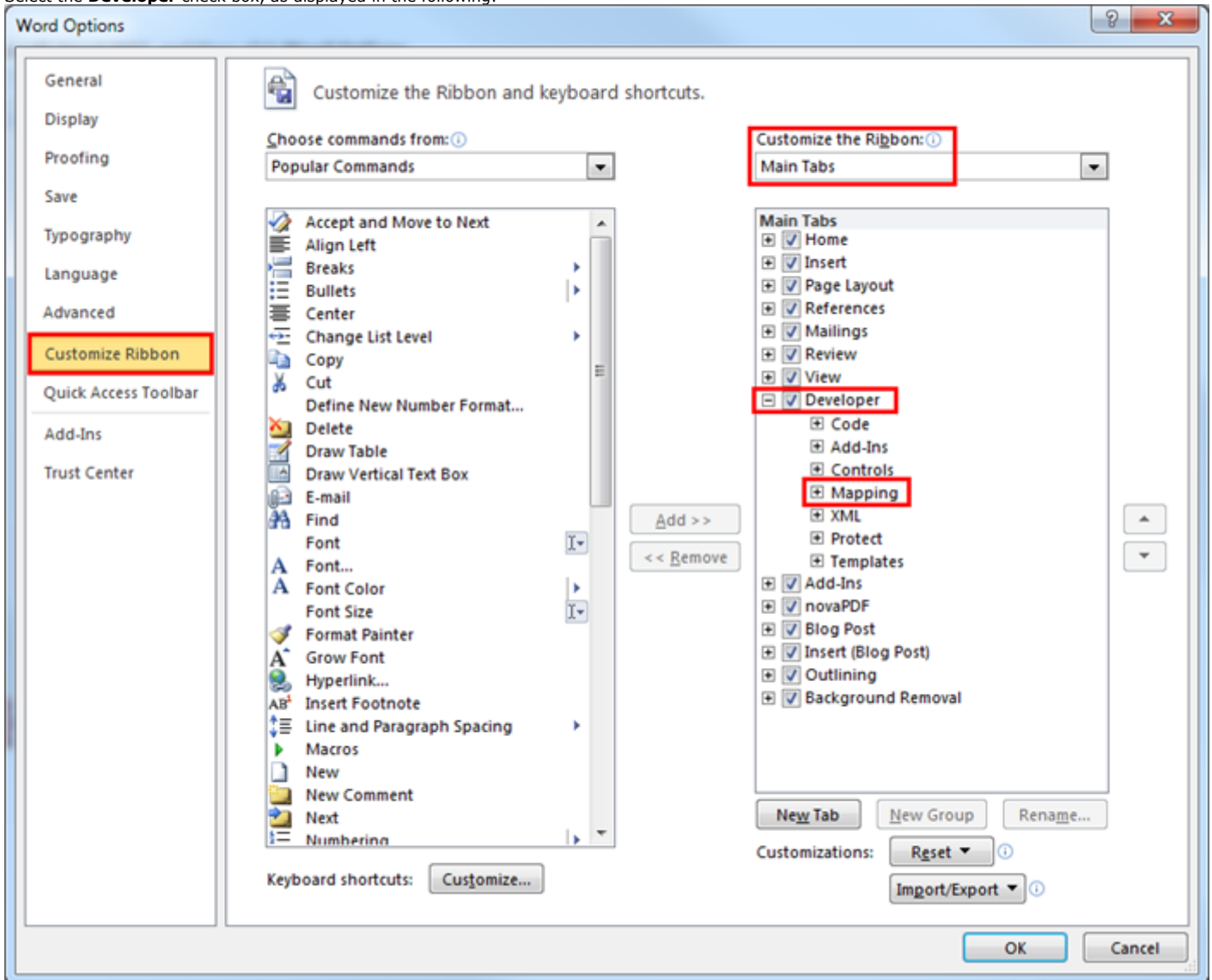
2. To troubleshoot this error, locate the installation file.
3. Right click on the installation file and select **Properties**.
4. In the **XMLMappingTaskPane Properties** screen, click **Unblock**.
5. Install again as per instructions in [Installing XML Mapping Task Pane](#).

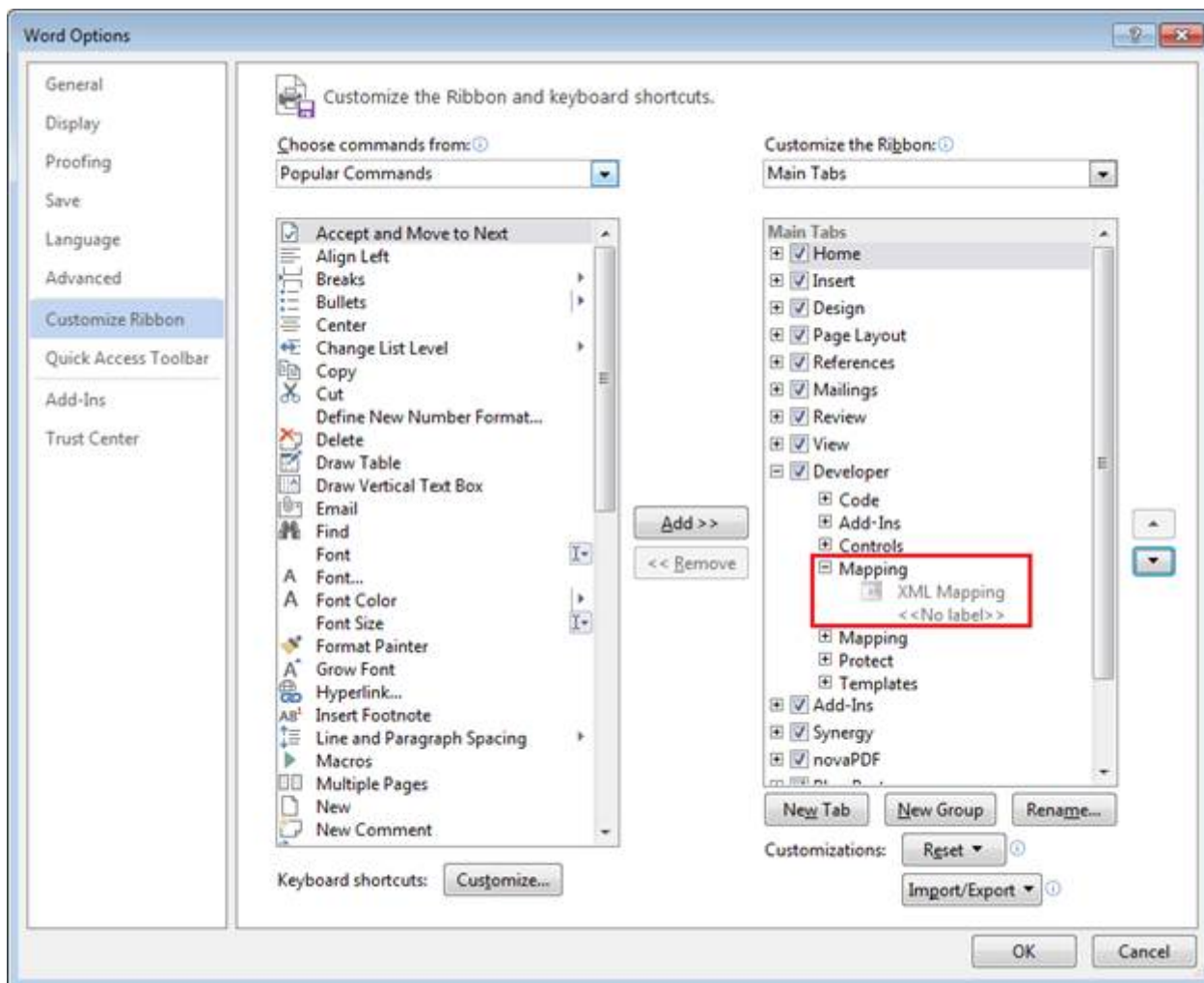
[Return to top](#)

d. Enabling XML Mapping Task Pane in Microsoft Word

Upon successful installation of XML Mapping Task Pane, users will have to enable the **Developer** tab ribbon to access the **XML Mapping** button.

1. Click **File** on the main menu.
2. Click **Options**.
3. In the **Word Options** screen, click the **Customize** ribbon.
4. Select **Main Tabs** at the **Customize the Ribbon** field.
5. Select the **Developer** check box, as displayed in the following:





6. Click **OK**.

[Return to top](#)

Related documents

- [Activating New Word Merge setting](#)
- [Creating e-mails with Word Merge on single processes](#)
- [Creating letters with Word Merge on single processes](#)
- [Hardware and software requirements for Exact Synergy Enterprise](#)
- [How-to: Creating Word Merge templates from Word Merge schemas](#)
- [How-to: Installing Exact Word Merge Integrator](#)
- [Overview of Word Merge schema groups and schemas](#)
- [Overview of Word Merge template groups and templates](#)
- [Results visibility in template browser based on Word Merge template management setup](#)
- [Setting up documents](#)