

History of Computers

The word 'computer' is an old word that has changed its meaning several times in the last few centuries. Originating from the Latin, by the mid-17th century it meant 'someone who computes'. The American Heritage Dictionary (1980) gives its first computer definition as "a person who computes." The computer remained associated with human activity until about the middle of the 20th century when it became applied to "a programmable electronic device that can store, retrieve, and process data.

Functions of Computer

A computer has four functions:

- a. Accepts data - Input
- b. Processes data - Processing
- c. Produces output – Output
- d. Stores results – Storage

Input (Data):

Input is the raw information entered into a computer from the input devices. It is the collection of letters, numbers, images etc.

Process:

Process is the operation of data as per given instruction. It is totally internal process of the computer system.

Output:

Output is the processed data given by computer after data processing. Output is also called as Result. We can save these results in the storage devices for the future use.

Computer System

All of the components of a computer system can be summarized with the simple equations.

COMPUTER SYSTEM = HARDWARE + SOFTWARE+ USER

- Hardware = Internal Devices + Peripheral Devices

All physical parts of the computer (or everything that we can touch) are known as Hardware.

- Software = Programs

Software gives "intelligence" to the computer.

- USER = Person, who operates computer.

The History of Windows Operating Systems

MS-DOS - Microsoft Disk Operating System (1981)

Windows 1.0 – 2.0 (1985-1992)

Windows 3.0 – 3.1 (1990–1994)

Windows 98 (June 1998)

Windows ME - Millennium Edition (September 2000)

Windows NT 3.1. - 4.0 (1993-1996)

Windows 2000 (February 2000)

Windows XP (October 2001)

Windows Vista (November 2006)

Windows 7 (October, 2009)

Windows 8

Windows 10

Windows XP Shut Down Process:

Step-1: 1 Left click on the Start Button in the lower left corner of the screen.

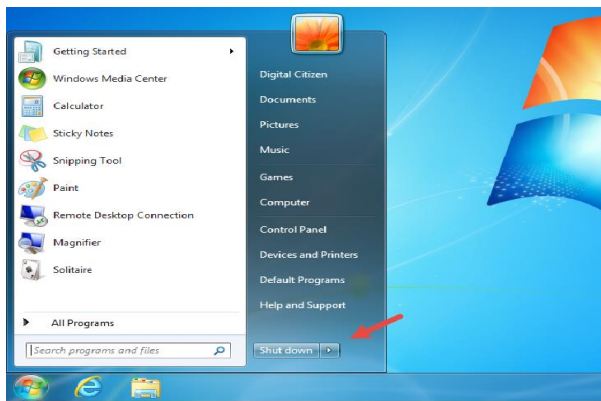


Step-2: When the menu appears, click on the red Shut Down button.

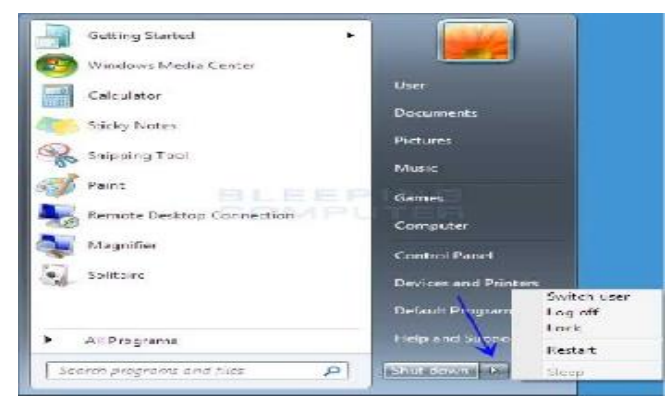


Windows 7 Shut Down Process:

Step-1: 1 Left click on the Start Button in the lower left corner of the screen.



Step-2: When the menu appears, click on the Shut Down button.

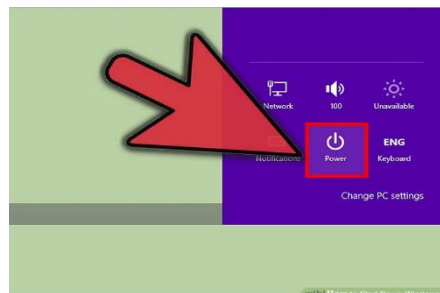


Windows 8 Shut Down Process:

1. Open the Charms bar. Move your cursor to the bottom-right or top-right corner of your display until you see the side Charms bar appear. If you are using a touchscreen device, swipe to the left from the right edge of your screen.



2. Select the Settings option at the bottom right of the bar. This will open a larger Settings sidebar.



Click or tap the Power button. A list of options will appear.

- Select "Shut down". Any programs that you have open will attempt to close automatically.

