

7, 14 & 16 Segment Display

Its a basic simulation using proteus professional V 8.2, we tried to show you that simulation is not that much difficult ,you can make your own name plate by using 14 segment led ,upto many words you can create words, number plates for two wheeler, 4 wheeler etc.

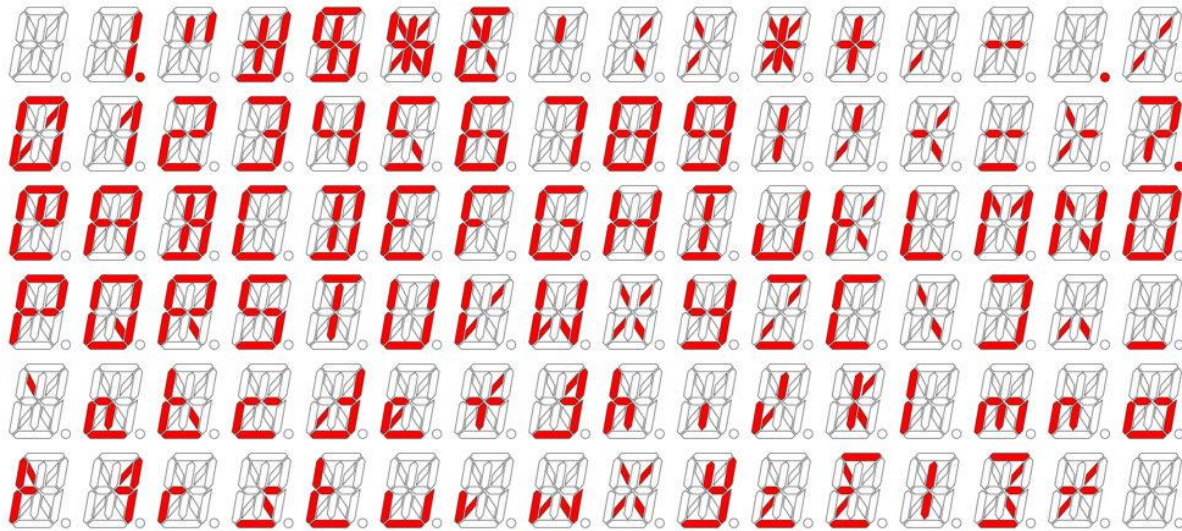


Figure 1 Using 14 Segment

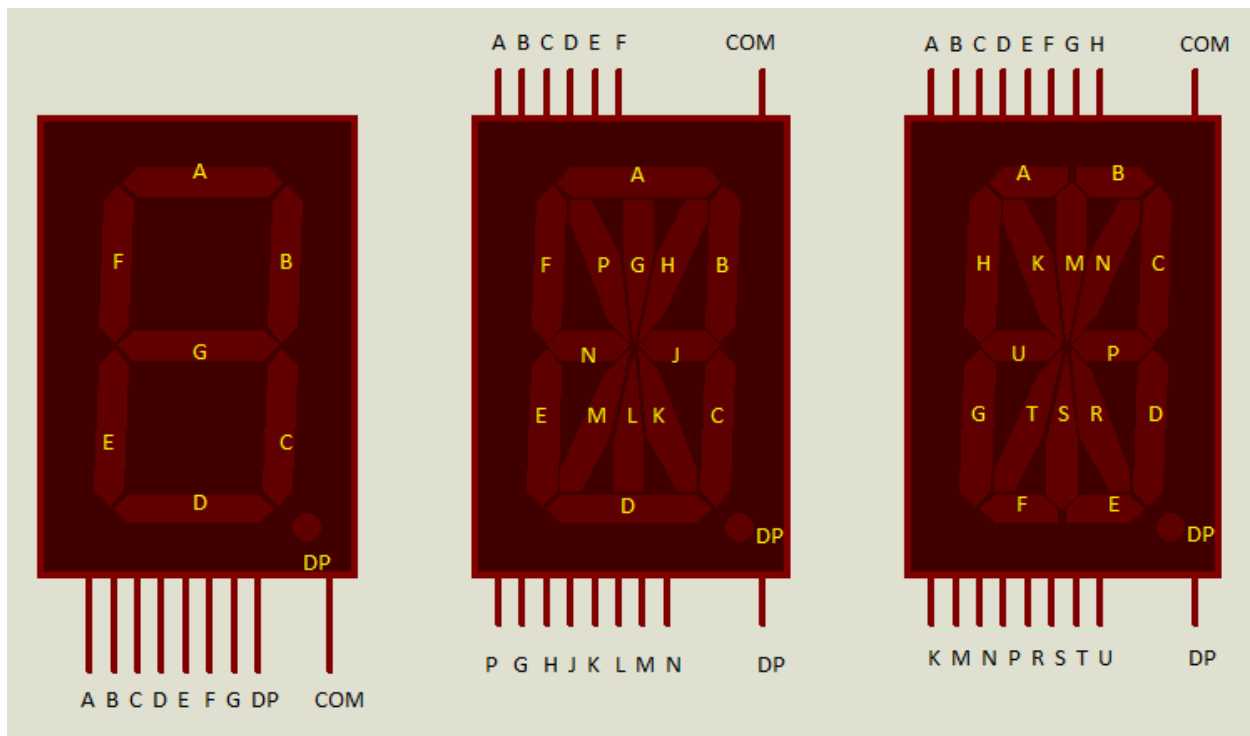


Figure 2 Pin out Diagram

AIM: Fourteen Segment Display Using 555 Timer in Proteus ISIS

Component Required:

1. 14 SEG Display
2. 555 IC
3. Capacitor 10uF
4. Res. (30k, 10k)
5. Button
6. Dc Source (10V)

Procedure:

1. First of all place all the components in your proteus workspace, as shown in the image given below:
2. First of all 555 Timer is installed, after that a Shift Register is added. 555 Timer will give clock to the Shift Register. Since we are using common cathode arrangement. So, the 14 input pin of SSD are connected to the output pins of Shift Register and the common cathode pin is connected to circuit's main cathode. If you have placed all the components in their exact positions and all the connections are OK. then, the resultant simulation will look like as shown in the image below:

Ckt Diagram:

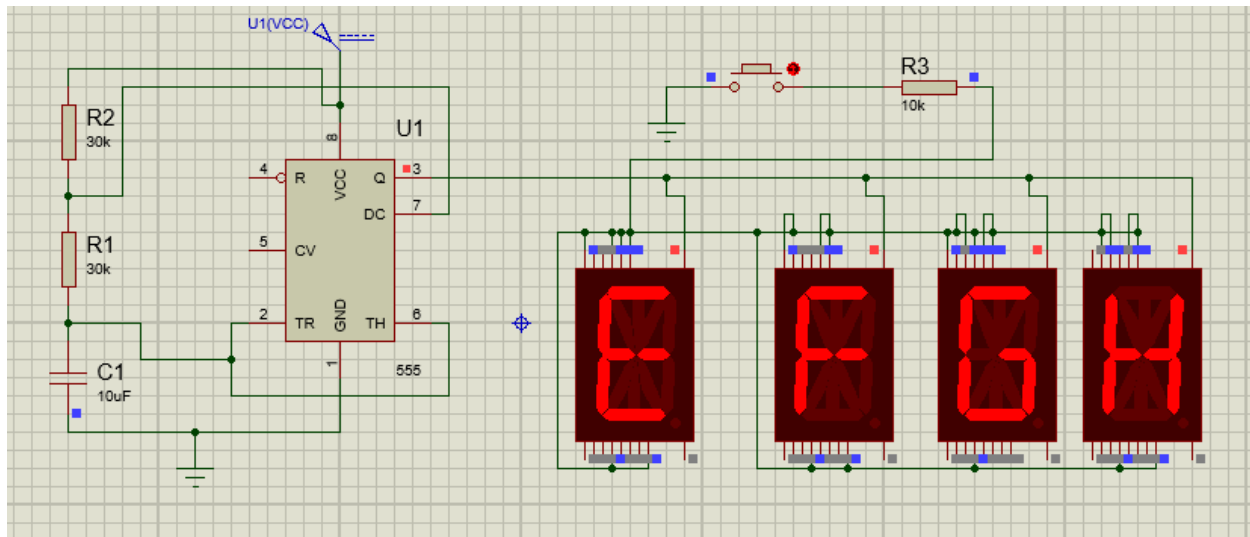


Figure 3 Ckt Diagram

Conclusion:

We have successfully identify Electronic Devices to Display Numerical Values. (Generally 14-segments or 16-segments display is used to display full alphanumeric values).